

The bioenergy revolution

A sustainable, flexible and reliable energy source



5th June 2019

Dr Paula Blanco
Dr Ana-Maria Cortes



1st GENERATION

Food and fodder
crops



2nd GENERATION & WASTE

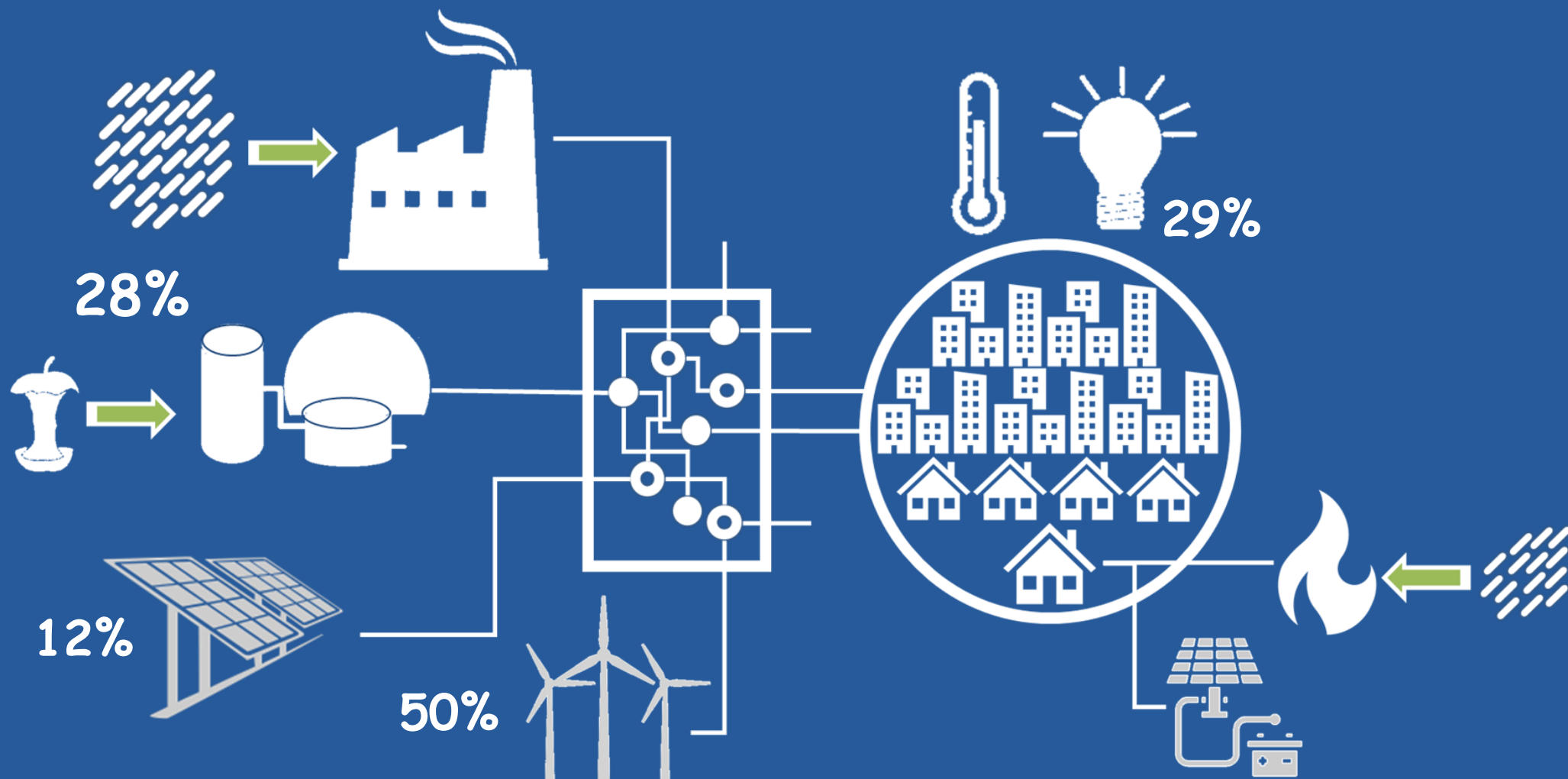
Energy crops,
agro-industrial,
forestry and municipal
waste





CHALLENGES

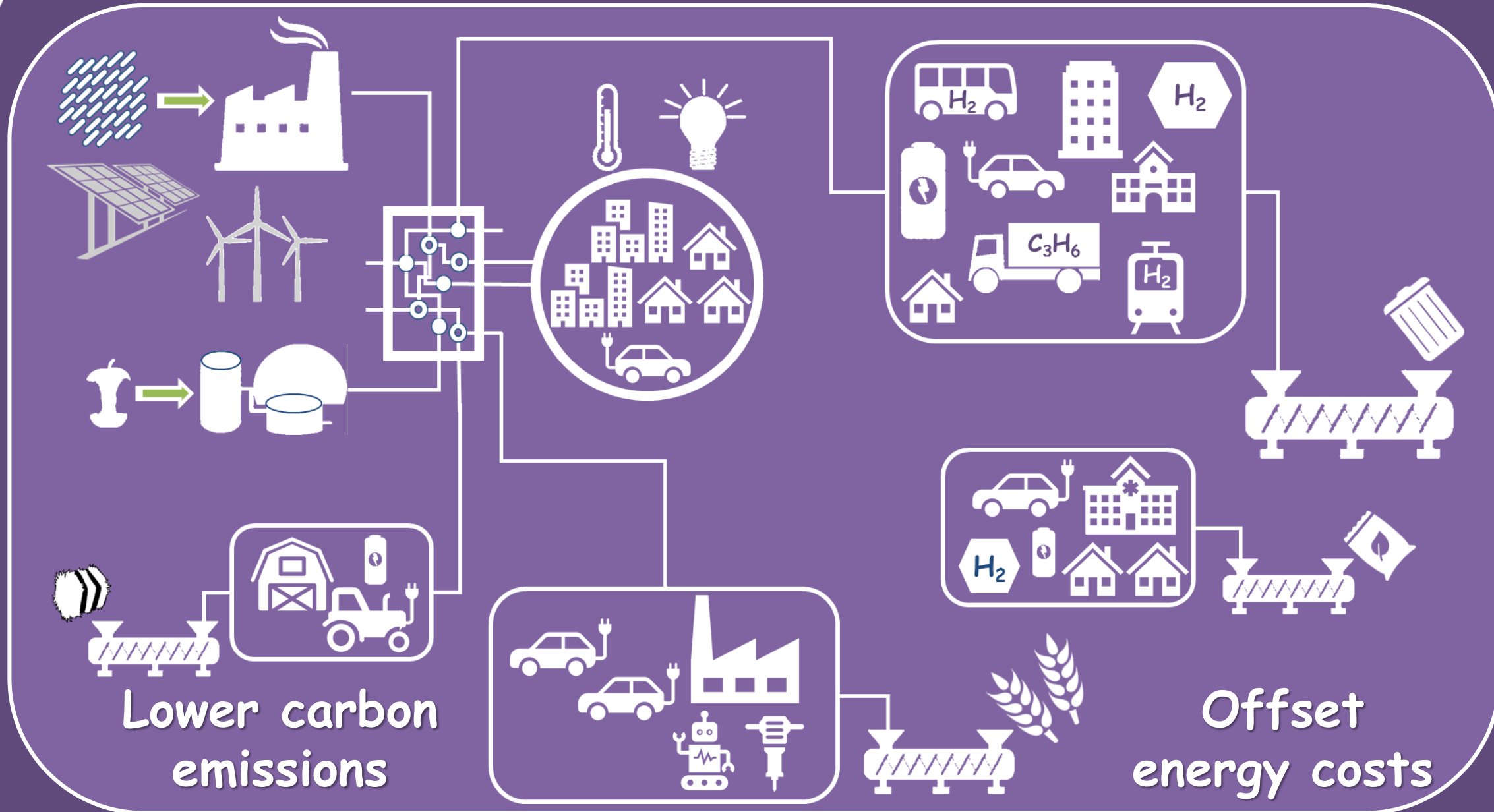
Why biomass is not as popular as wind and solar?



DUKES data from 2017



POTENTIAL



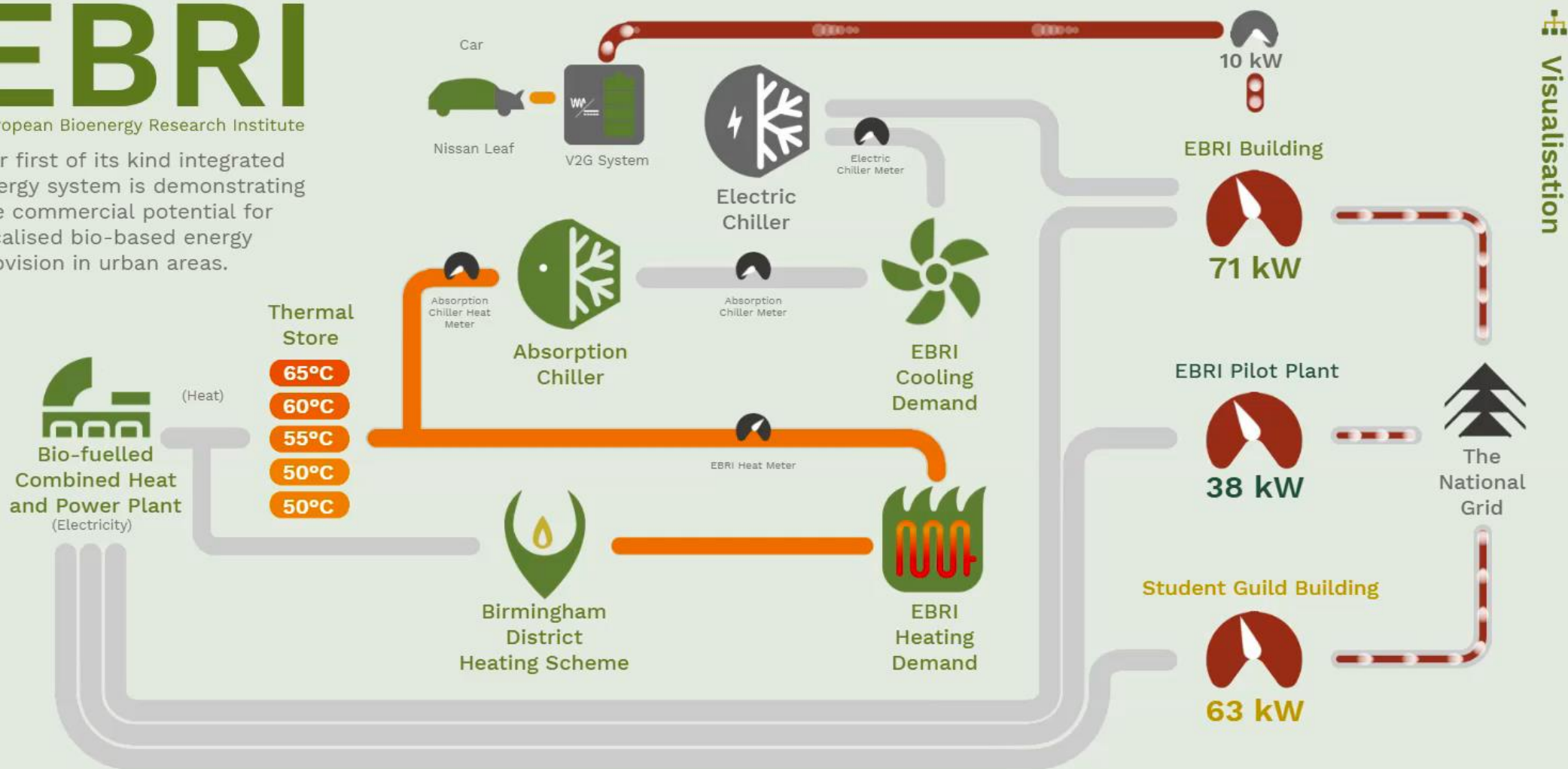


RESEARCH

EBRI

European Bioenergy Research Institute

Our first of its kind integrated energy system is demonstrating the commercial potential for localised bio-based energy provision in urban areas.

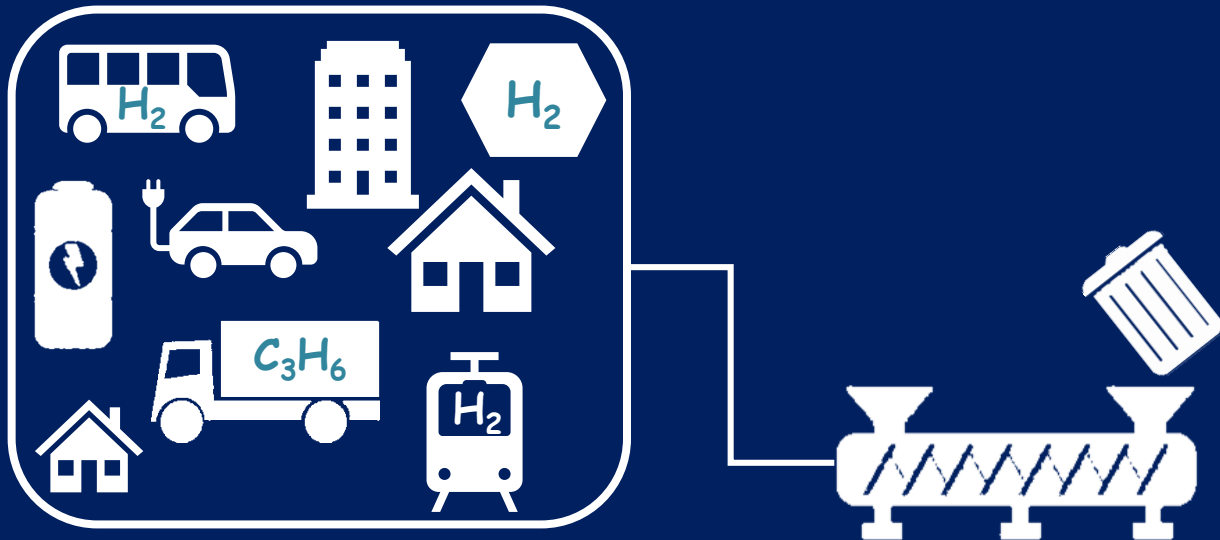


Biomass CHP

400kWel internal combustion engine modified to take a wider variety of first and second generation oils. The engine also has the capability to run in a bi-fuel mode when our gasifier is operating.

INTEGRATION

Sustainable, flexible and reliable



Contact us if you want to be part of the revolution!



Visit us in stand 25



bioenergy@aston.ac.uk



@EBRI_UK